

How to user AliEditor

V1.2

5/17/2019

This guide fit the following boxes from GTMEDIA:

GTMEDIA V9SUPER

GTMEDIA V8FINDER-METER

Preface

AliEditor.exe is one user database edit tool for all chipset from ALI.

We rebuild some feature based standard application for www.freesat.cn.

Change List

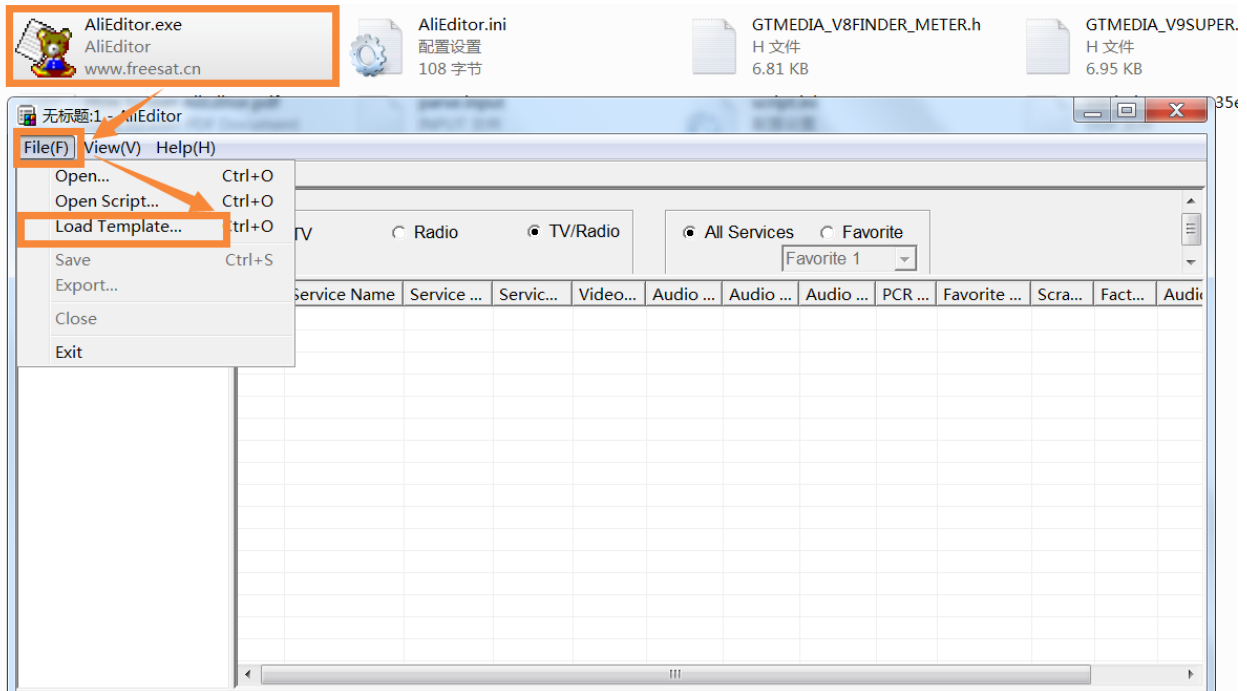
1)2019/0517:

Enable the feature about generated the preset satellite/TP list.

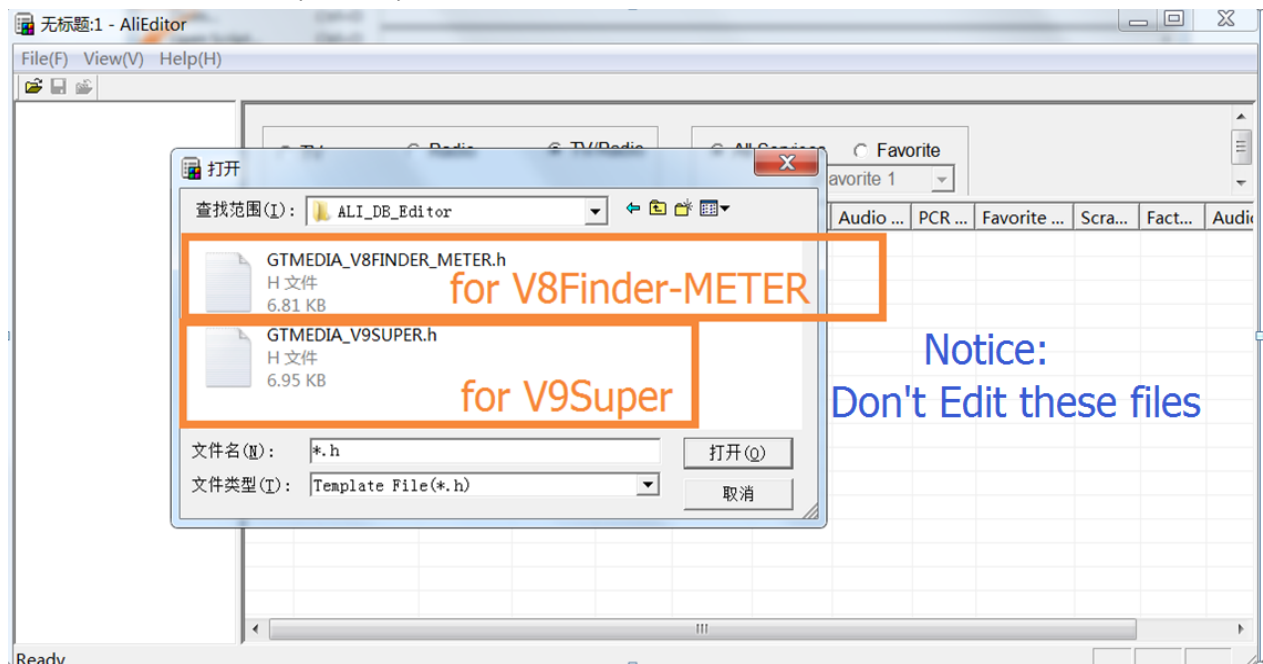
1. Select the box type:

Open the directory included AliEditor.exe and double click this file.

Select File → Load Template...

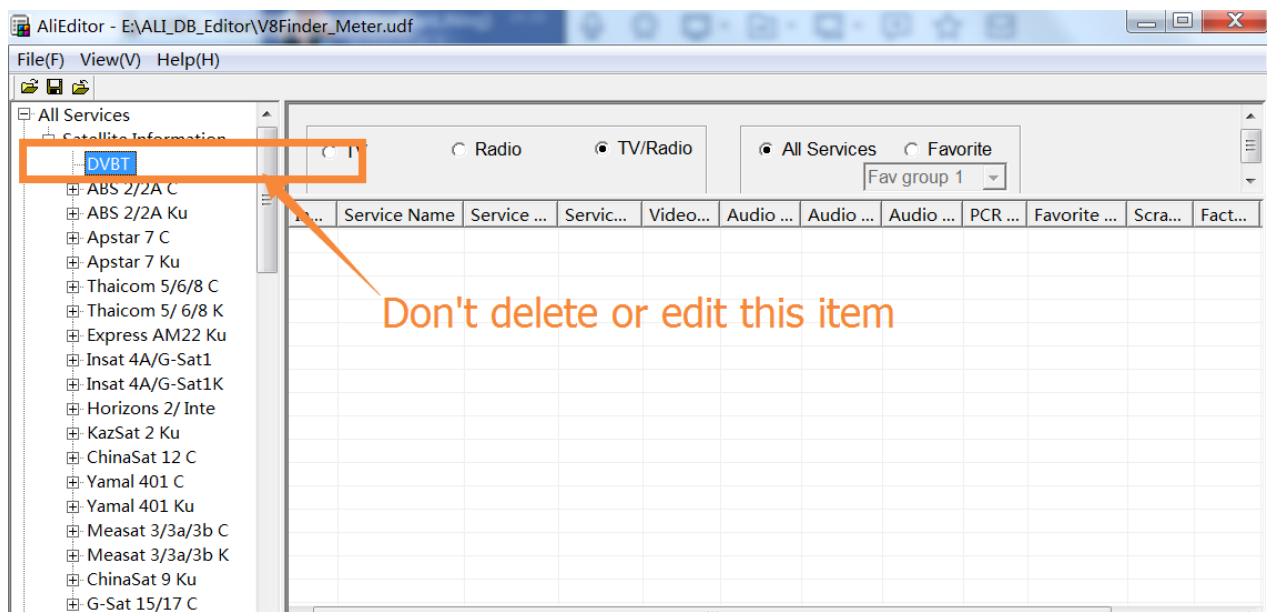
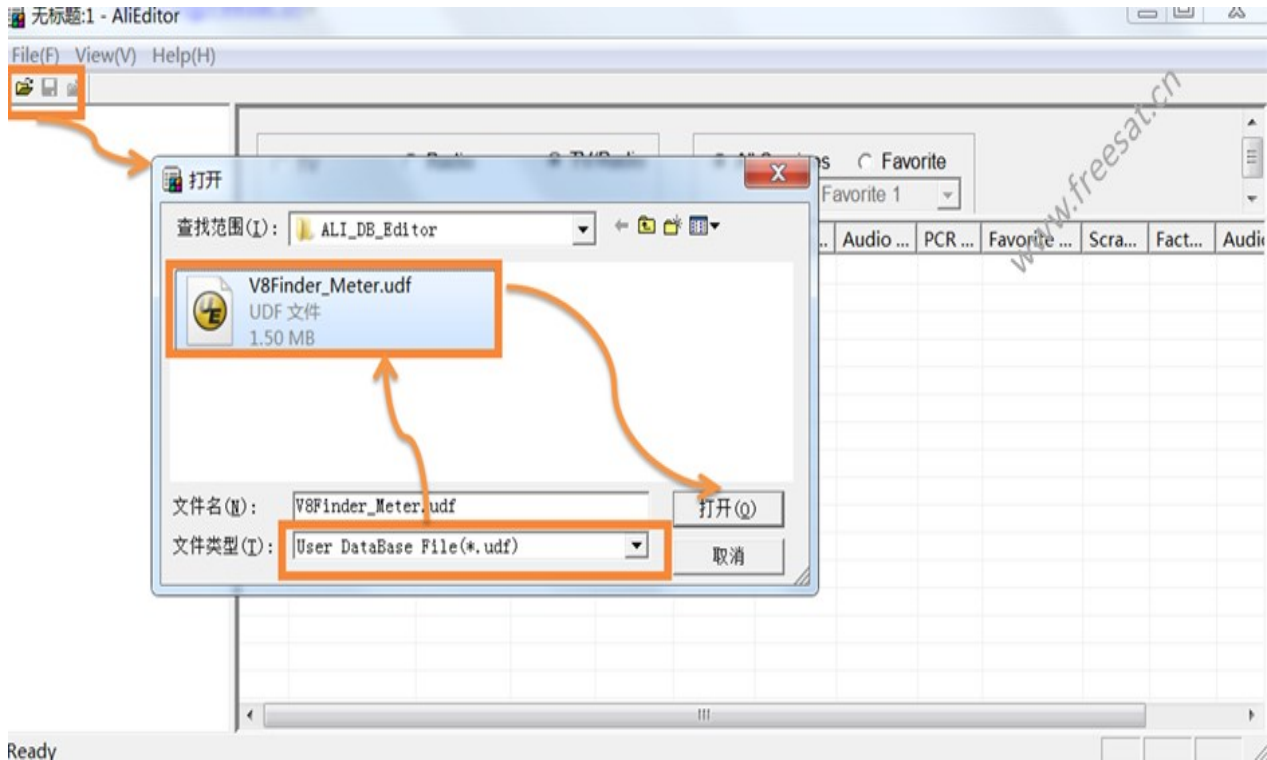


Please select the correctly file for your box:

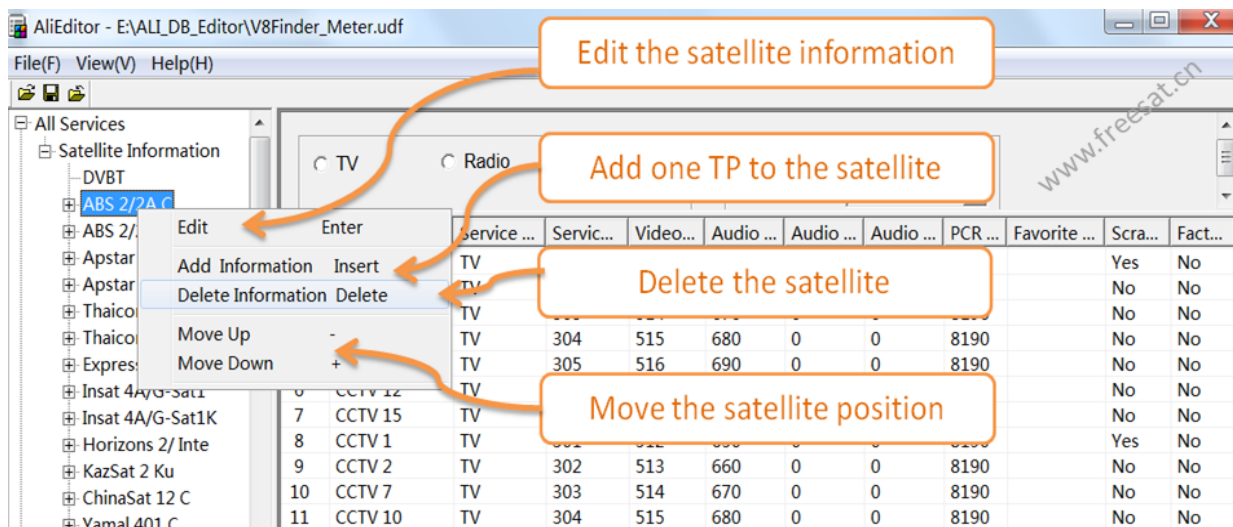
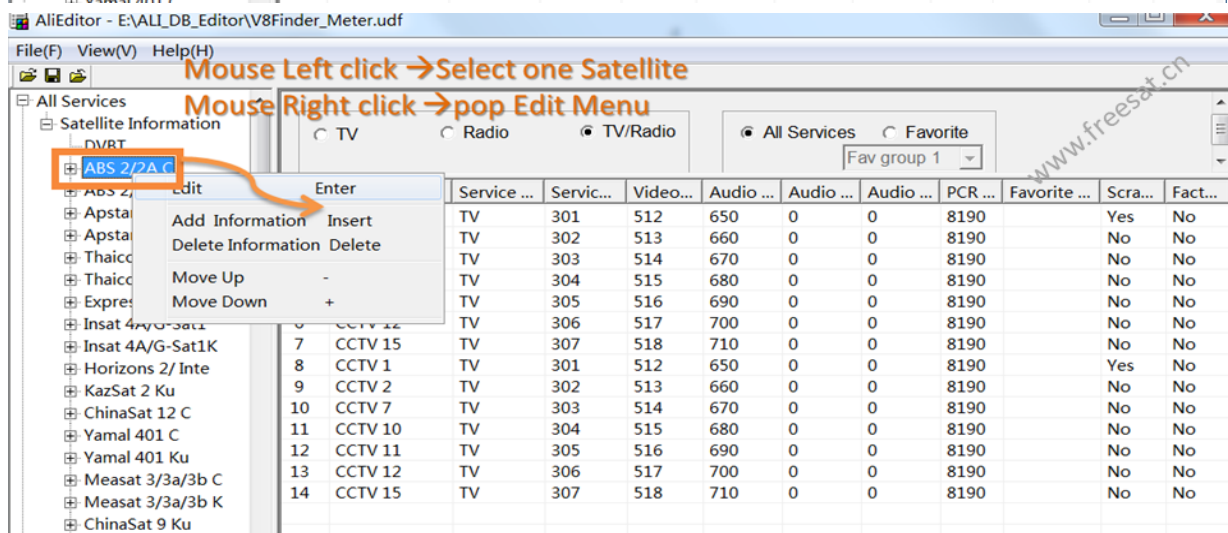
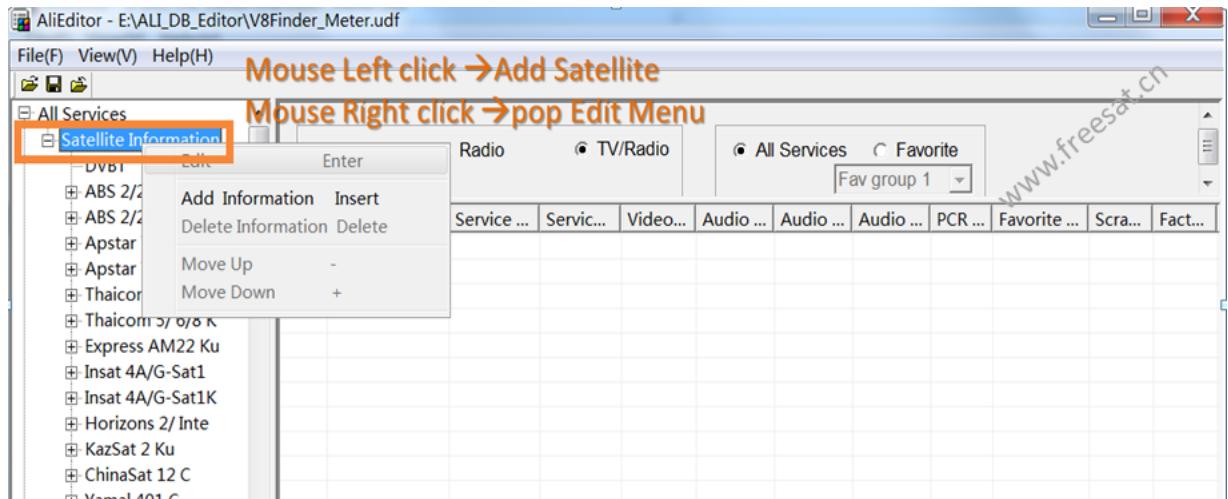


2.Edit the Channel List:

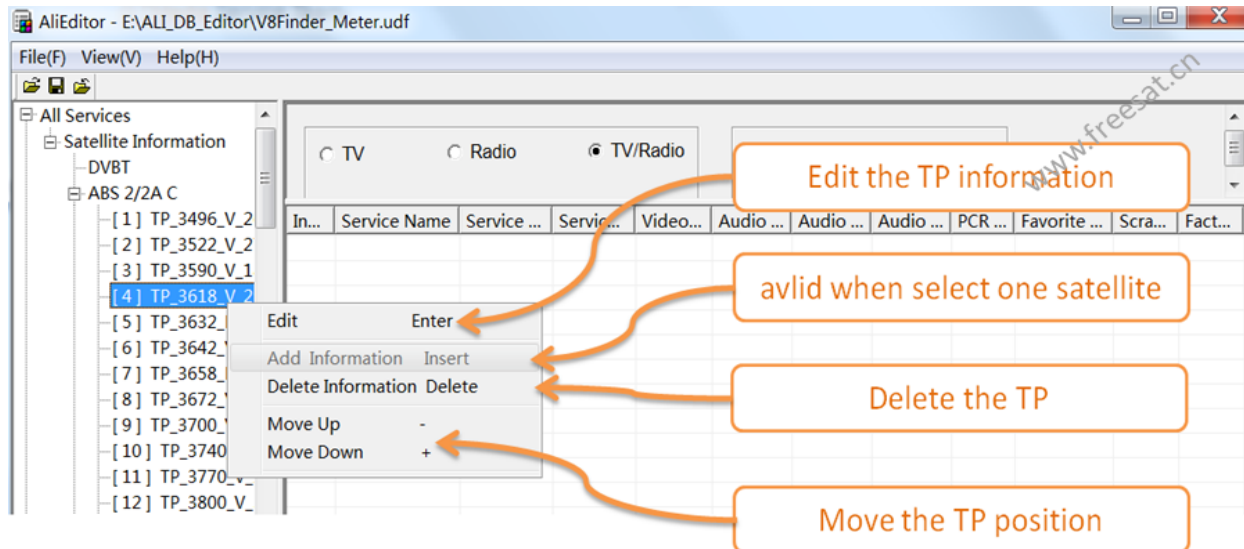
2.1)Open the database file backup from your box.



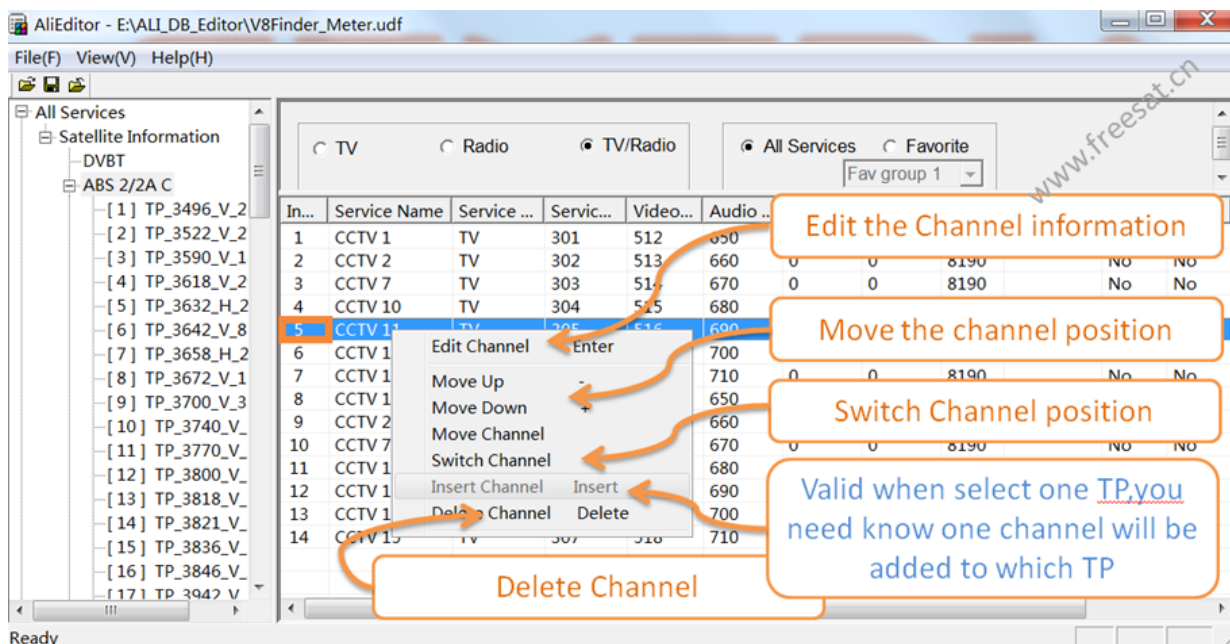
2.2)Edit Satellite



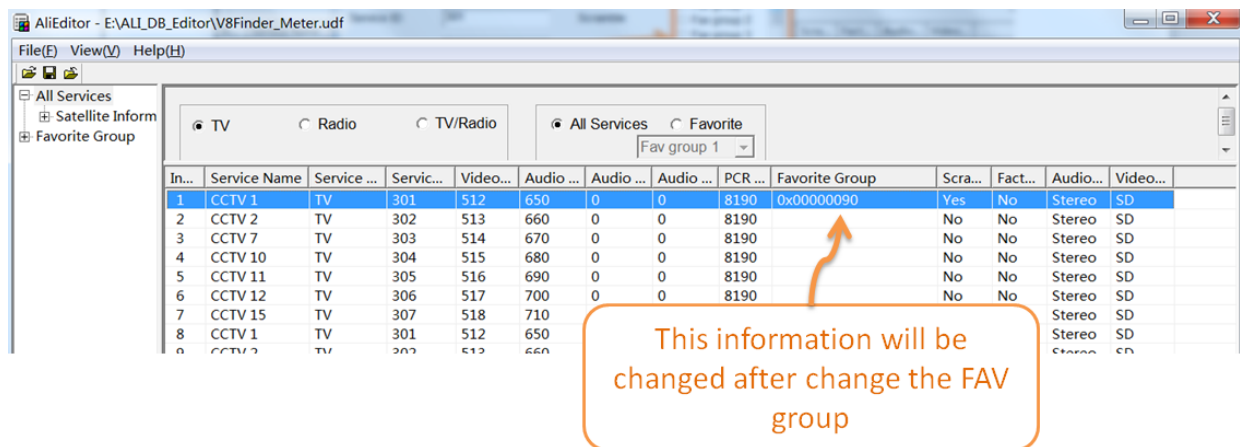
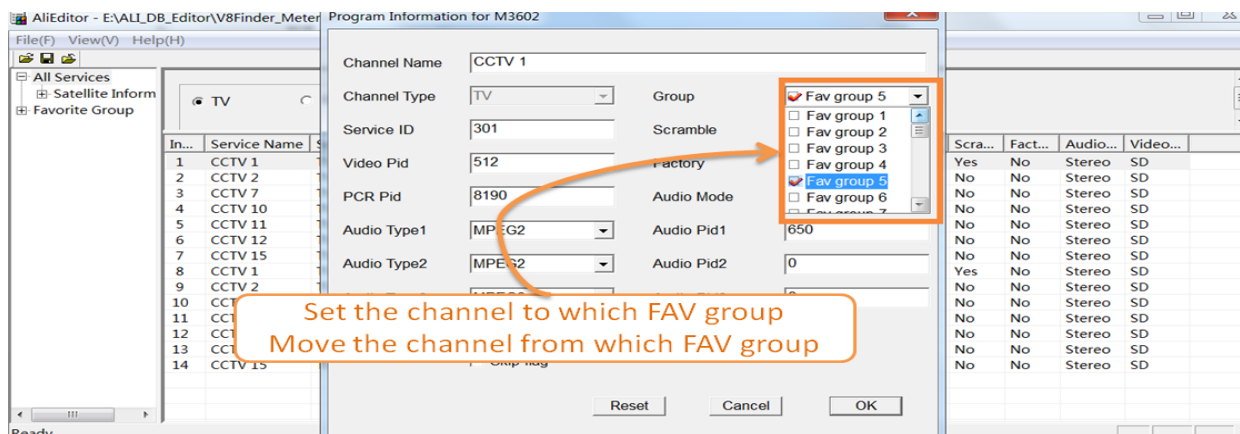
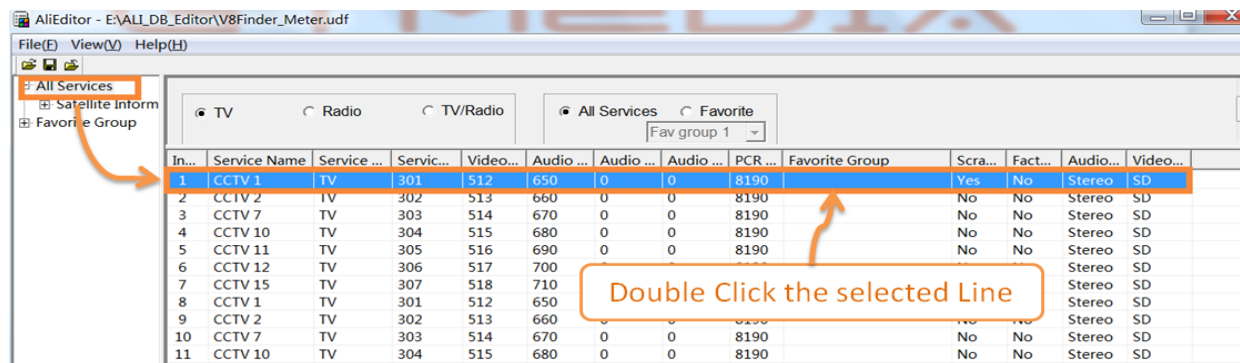
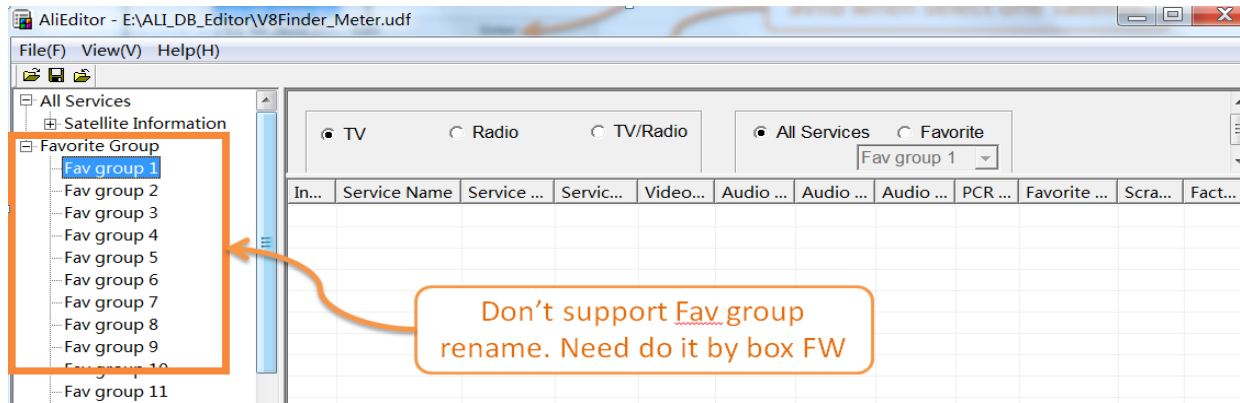
2.3)Edit TP



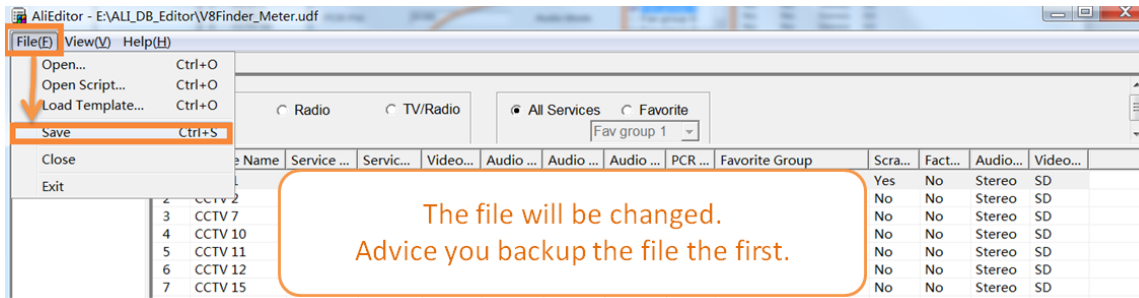
2.4)Edit Channel



2.4) Favorite Setting



2.5)Save &Exit



3.Generate the Preset Satellite and TP list :

This feature is for user generated owner preset satellite and tp list for the V8FINDER-METER.

3.1)Prepare the satellite and TP information then fill the file named **User define Satellite TP list.xls**.

1	2	3	4	5	6	7	8	9	10	11	12	13	14	15	16	17	18	19	20	21	22	23	24	25	26
A	B	C	D	E	F	G	H	I	J	K	L														
V2.0																									
*Satellite Name	LNB Type	First FRQ	Second FRQ	Position	Sat Orbit	DiSEqC Type	DiSEqC Port	22K	12V	ToneBurst	LNB_POWER														
TP	LNB Type	First FRQ	Second FRQ	Position		DiSEqC Type	DiSEqC Port	22K	12V	ToneBurst	LNB_POWER														
*Channel Name	Frequency	Symbol Rate	Polarization																						
*DVB-T	Teletext pid	Video pid	Audio pid1	Audio pid2	Audio pid3	PCR pid	Level	Factory	TV/Radio	Service ID	Scramble														
*ABS 2/2A C	32	5150	5150	0	2990	0	0	0	0	0	0														
	32	5150	5150	0	750	0	0	0	0	0	0														
	32	5150	5150	0		0	0	0	0	0	0														
TP	3496	26583 V																							
TP	3522	2750 V																							
*ABS 2/2A Ku	32	9750	10600	0	750	0	0	0	0	0	0														
	32	9750	10600	0		0	0	0	0	0	0														
TP	10985	35007 H																							
TP	11045	44922 H																							
*Nilesat 201/Eutelsat 7/West A Ku	32	9750	10600	0	3530	0	0	0	0	0	0														
	32	9750	10600	0		0	0	0	0	0	0														
	10719	22000 V																							
	10727	27500 H																							
	10758	27500 V																							

3.2) Save the .xls file to txt(*Table Delimited*) then close the file :

